

MODE SELECT

TUNING:

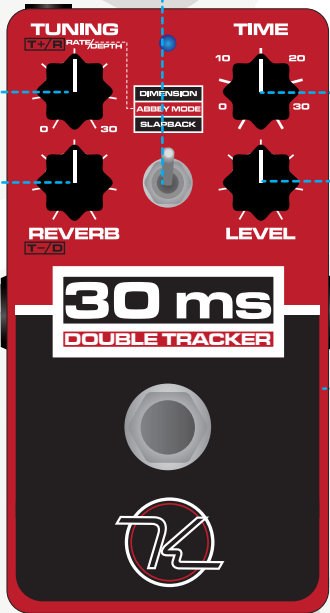
DIMENSION and SLAPBACK MODE:

this controls the tuning of double tracked voices up to +/- 30 Cents.

ABBY MODE this controls Modulation Rate and Depth.

REVERB:

Controls Amount of Vintage Studio Echo Chamber Style Reverb, with roll-offs at 600Hz and 10KHz.



TIME:

Controls Delay time from 0-30ms
In SLAPBACK Mode, from 30-120ms

LEVEL:

Controls output level of the effect.

INTERNAL SWITCHES

MONO CABLE OPERATION		
SW1	SW2	MODE
UP	UP	MONO+REVERB
UP	DWN	MONO+DBL TRK PRO

<<FACTORY
DEFAULT

30ms
DOUBLE TRACKER

EFFECT TYPE:

Double Tracker / Short Time Delay / Static Chorus / Reverb

Power Requirement:

9VDC Center Negative, 65mA+
Power Supply Required.

Input/Output:

Mono Instrument In,
Mono or Stereo TRS Output

Output is Mono when standard instrument cable is used. When TRS cable is used, RING carries original signal, TIP carries effected signal.

TRS Stereo Cable Operation				
SW1	SW2	TIP OUTPUT	RING OUTPUT	MODE
UP	UP	FX+DRY	DRY	FX W/ REVERB (STOCK)
UP	DWN	FX+DRY	DRY	DOUBLE TRACK PRO
DWN	UP	FX	DRY	FX W/ REVERB (STOCK)
DWN	DWN	FX	DRY	DOUBLE TRACK PRO

Note: Tip Turns Off in Bypass Any Time SW1 is down

INTRODUCTION

Thanks for purchasing the Keeley 30ms Automatic Double Tracker. Studio engineers started doubling tracks to make voices or instruments sound thicker and more spacious. The 30ms effect pedal gives you the tools to play these sounds live! The 30ms creates additional voices of your instrument that are altered in pitch and slightly delayed in time. This is exactly how they create wide, lush sounds in the studio. This pedal creates a chorus-like effect in Abbey Mode by emulating vintage tape decks synched in parallel. In Dimension Mode, two voices are created giving you the ultimate double-tracking experience. The Slapback Mode gives you a brand new, never heard before echo effect. The pedal's Abbey Reverb is a unique simulation of the 1960's echo chamber in the famous British Studio Two. We have even incorporated the delays in tape machines, pre-delay times, and an assortment of filters that the studio had used to create those incredibly classic sounds. Enjoy a true chorus of sounds and delays like you've only heard done on the recordings.

EXPLANATION OF MODES

DIMENSION: This mode produces 2 Voices, both slightly detuned, you can control the pitch of these with **TUNING**, and delay them by up to 30MS

ABBY MODE: This mode was designed to approximate the double tracking effect employed on legendary British studio sessions of the 60's. A single delayed voice with a modulation effect reminiscent of manually slowing a tape machine.

SLAPBACK: This mode produces an adjustable classic Slapback Delay from 30ms-120ms, as well as the 2 adjustable doubled voices.

DOUBLE TRACKING PRO MODE

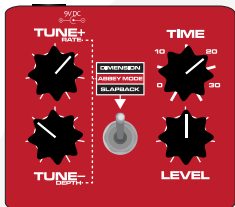
Double Tracking Pro Mode is enabled by switching the internal switch #2 to the down position. This changes the control layout of the pedal to the one pictured here. A reminder of the control layout is represented on the face of the pedal by these markers

T-D T+A

In this mode, move internal switch #1 to down position and use TRS cable for an incredible stereo sound with double tracked voices in one channel and original in the other.

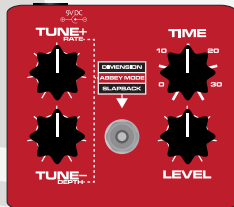


EXAMPLE SETTINGS IN DOUBLE TRACK PRO MODE



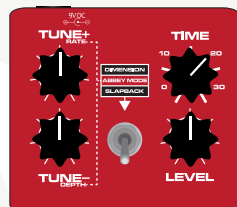
DIMENSION MODE

Tune+: Sharp 20 Cents
Tune -: Flat 10 Cents
Time: Delayed 20ms



ABBY MODE

Rate: 2Hz (Range: 0-4Hz)
Depth: 1.75ms (Range: +/- 3.5ms)
Time: 15ms



SLAPBACK MODE

Tune+: Sharp 15 Cents
Tune -: Flat 15 Cents
Time: 80ms Slapback