



MOD V2

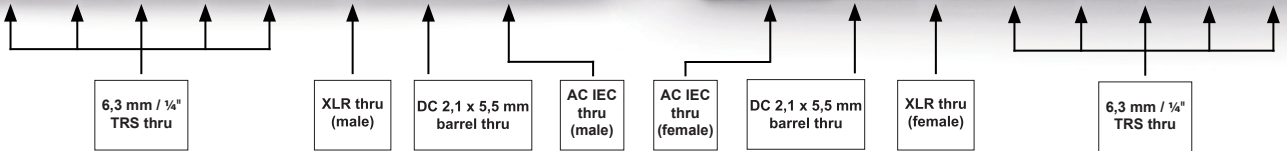
1+2+3 manuals

Thank you for purchasing a RockBoard® MOD V2 - the new portal to your setup!

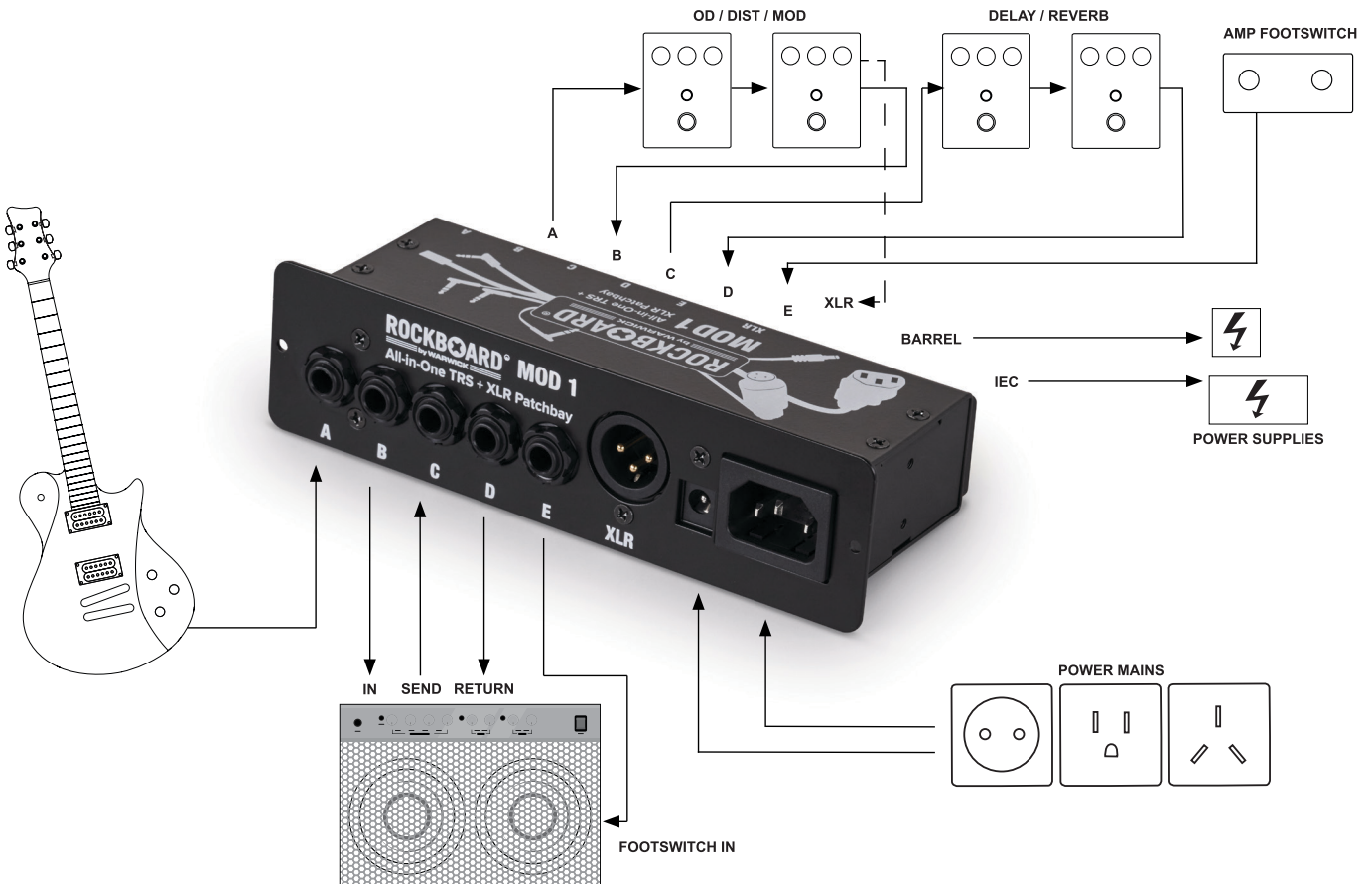
The RockBoard® MOD V2 All-in-One Patchbays offer a simple solution to organize all the connections to and from your effects setup, whether you are using a RockBoard® or any other brand pedalboard. The MODs are designed to route connections from underneath your pedalboard to its front, in order to give you a central access point to your setup and tidy up your connections. Please note, that the MODs do not require any power, and they do not distribute power. They are routing tools to organize your effects rig's connections.

There are 3 different "patchbay-only" versions of the MODs:

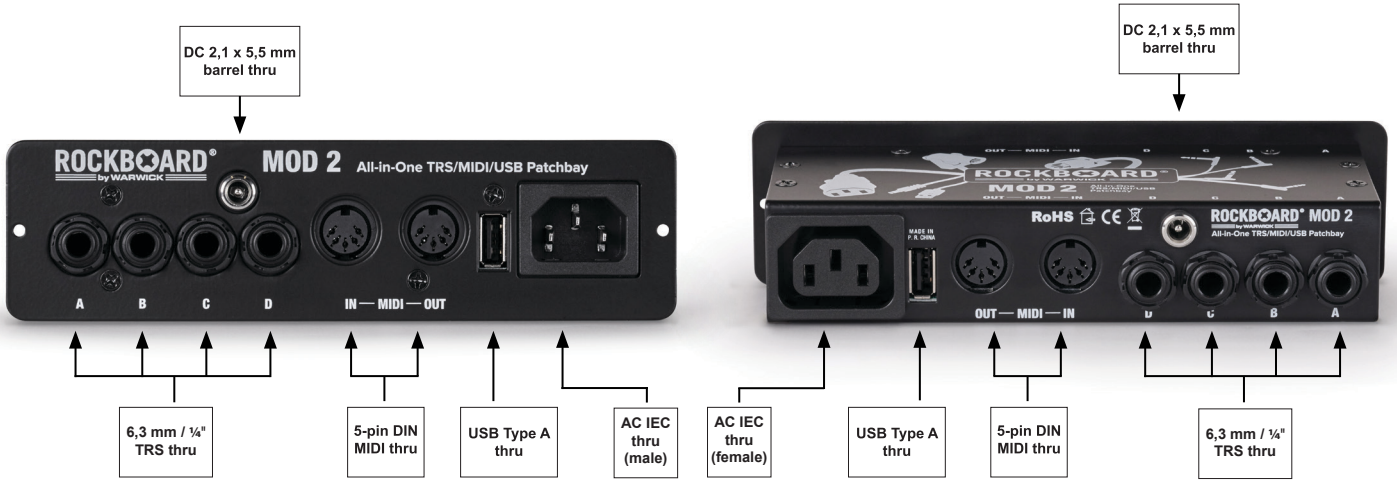
MOD 1 V2



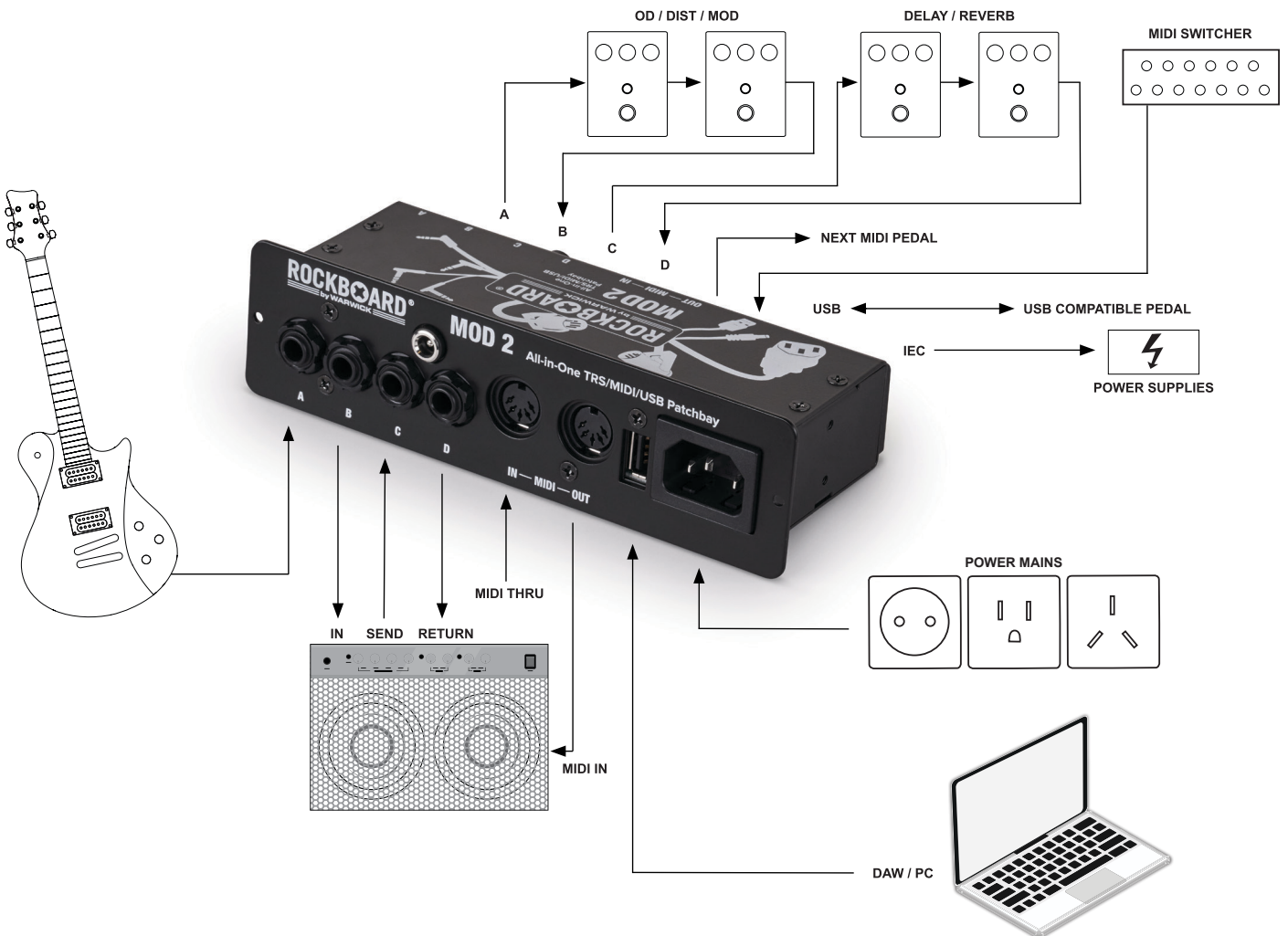
EXAMPLE SET UP



MOD 2 V2



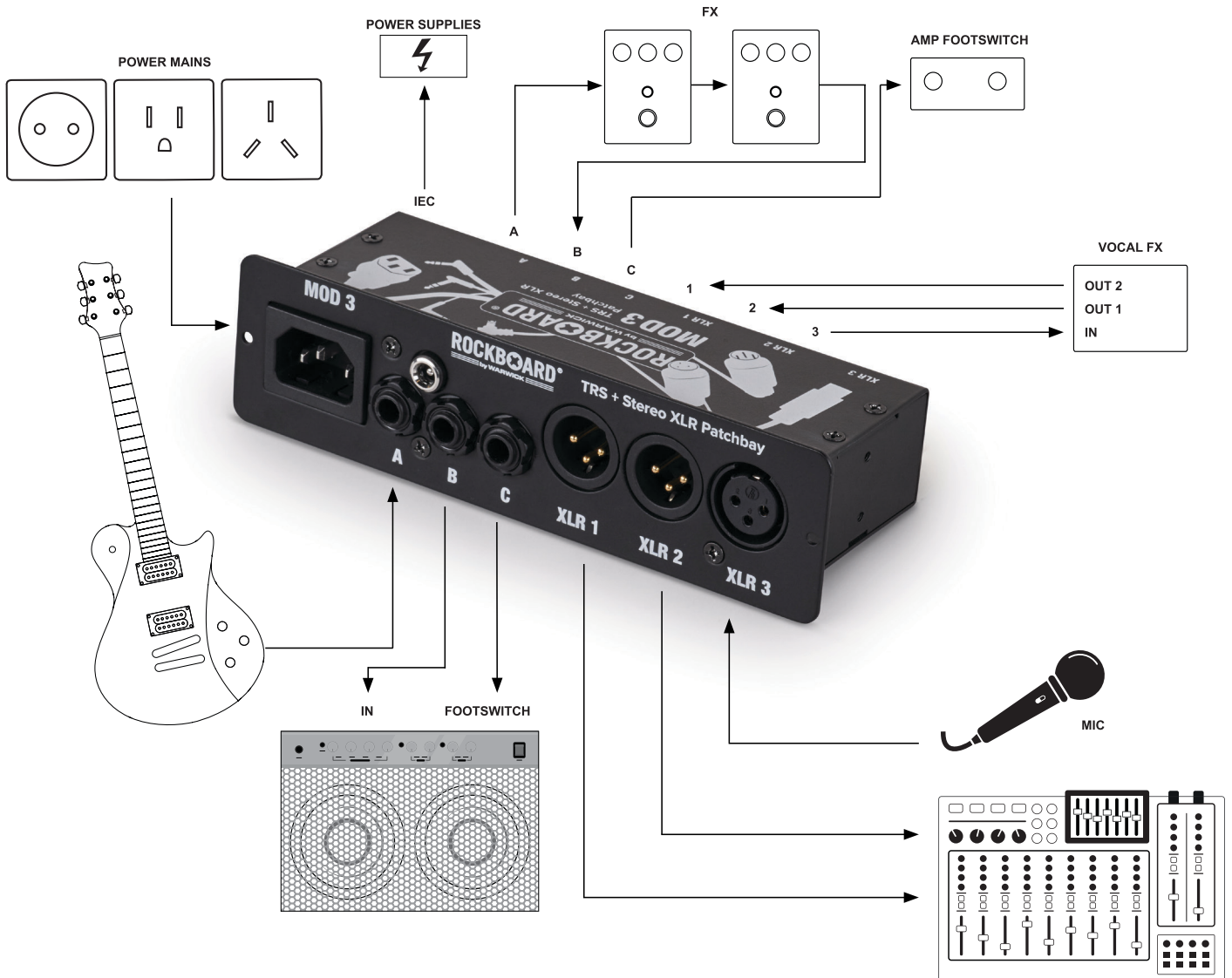
EXAMPLE SET UP



MOD3 V2



EXAMPLE SET UP

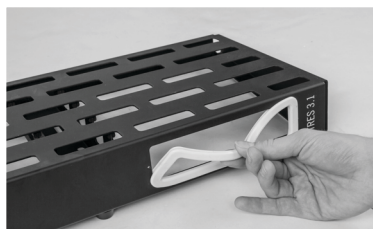


For mounting your new MOD V2 onto a **RockBoard®** pedalboard, there are multiple options. You can either mount it in its MOD slot (available on all **RockBoard®** pedalboards except DUO 2.0 and 2.1) or detach the MOD's front plate and mount it on top or underneath your 3rd party pedal Board.

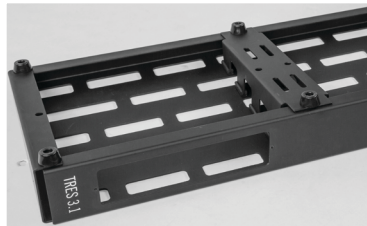
Mounting on a RockBoard® Pedalboard:

Please follow the below steps to mount your MOD V2 in the MOD slot of your **RockBoard®** Pedalboard.

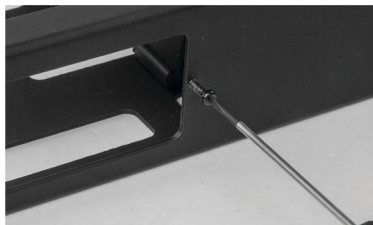
BEFORE PLACING YOUR MOD IN THE ROCKBOARD®'S MOD SLOT: PREPARING THE PEDALBOARD



STEP 1
Remove the rubber frame of your **RockBoard®**'s MOD slot.



STEP 2
Turn the **RockBoard®** pedalboard upside down.



STEP 3
The MOD mounting screws are self-tapping, they will cut their own threads into the pre-drilled mounting holes in the **RockBoard®**'s front. Use a TX10 screwdriver to screw the mounting screws in and cut the threads. Should you do not possess a TX10 screwdriver, a wrench is included with the MOD. For the



STEP 4
Once the tips of the screws are sticking out on the other side of the holes and the screws become easier to turn, the threads have been cut properly. Now remove the screws again.

first couple of rotations the screws will be hard-going, as they have to cut the threads into the surrounding material. Please be careful not to screw them in at an angle.

NOW IT'S TIME TO LOAD THE MOD:



STEP 5
Next, load your chosen MOD from the front into the slot and screw in the mounting screws until the MOD's front plate sits flush with the face of the board.



STEP 6
For added security, you screw on the counter nut on the back. Now the MOD is ready to be connected with your setup! Should you have difficulties to reach the screws from behind to screw on the nuts, you can take out the additional support brace in order to have space using.

Please use the 3 mm hex key wrench included with the **RockBoard®** pedalboard.

Detaching the MOD V2's front plate:

For mounting the MOD V2 All-in-One Patchbays on top or underneath your pedalboard, you will have to detach the Front plate, so it will fit flush onto/under the board surface. Remove the screws as indicated below to release the front plate from your MOD V2 using a PH2 Phillips head screw driver. The mounting nuts of the jack sockets do not have to be removed!

MOD 1 V2



MOD 2 V2



MOD 3 V2



Mounting on a non-RockBoard® pedalboard:

There are multiple ways of mounting your MOD on a non-**RockBoard®** pedalboard. You can either mount it directly to the board surface using hook & loop tape or another recloseable fastener. Additionally **RockBoard®** offers the MOD Rack for mounting your MOD in various ways onto, into or underneath pedalboards of other manufacturers. For mounting your MOD using the **RockBoard®** MOD Rack, please refer to the MOD RACK manual. Please follow the below steps to mount your MOD V2 in the MOD slot of your non-**RockBoard®** pedalboard.



STEP 1
Release the MOD's front plate by removing the screws indicated above.



STEP 2
Apply self-adhesive hook tape or another recloseable fastener to the underside of the MOD housing.



STEP 3
Apply self-adhesive loop tape or another recloseable fastener to the position of on or underneath your pedalboard where you want to place your MOD V2.



STEP 4
Bring the two sides of hook & loop tape or your other reclosable together attach your MOD. Now the MOD is ready to be connected with your setup!